

# Customize your Ubuntu Desktop and Make it Awesome!

Philip Ballew  
San Diego, CA

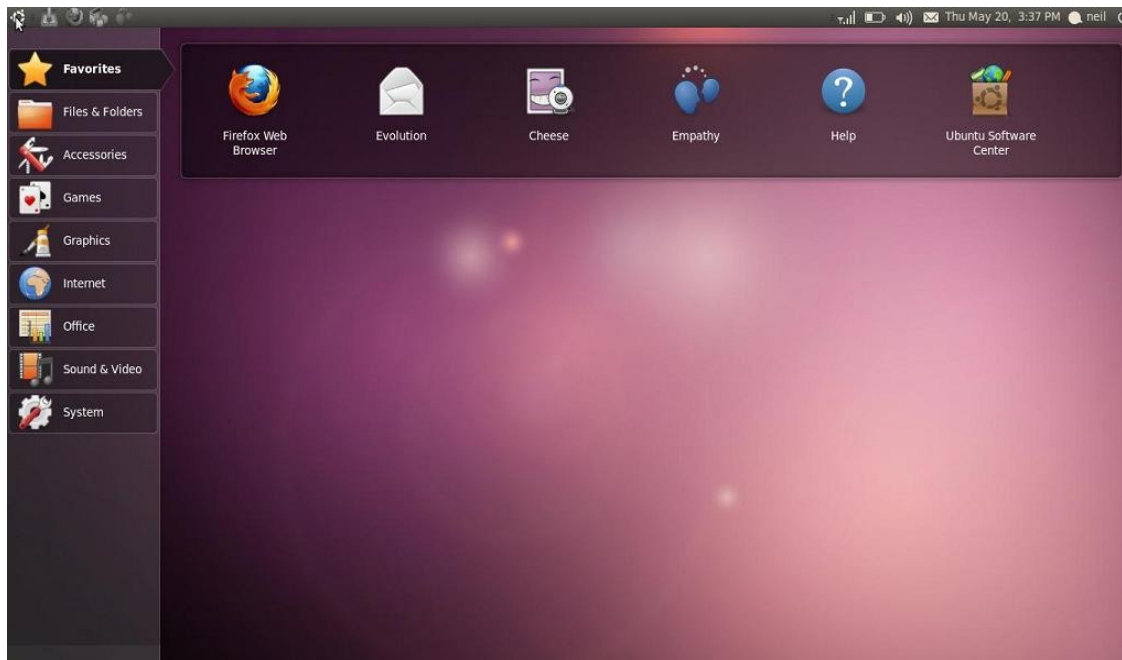
- Philip Ballew
- San Diego, California USA
- 23 years old
- Hobbies
  - Bike Riding
  - Dancing badly
  - Tripping
  - Using sarcasim at the wrong time



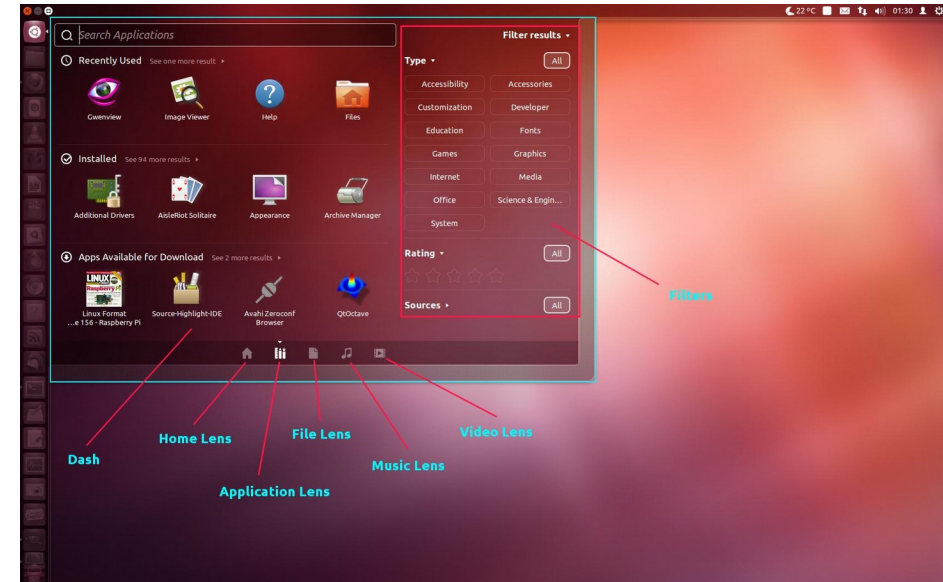
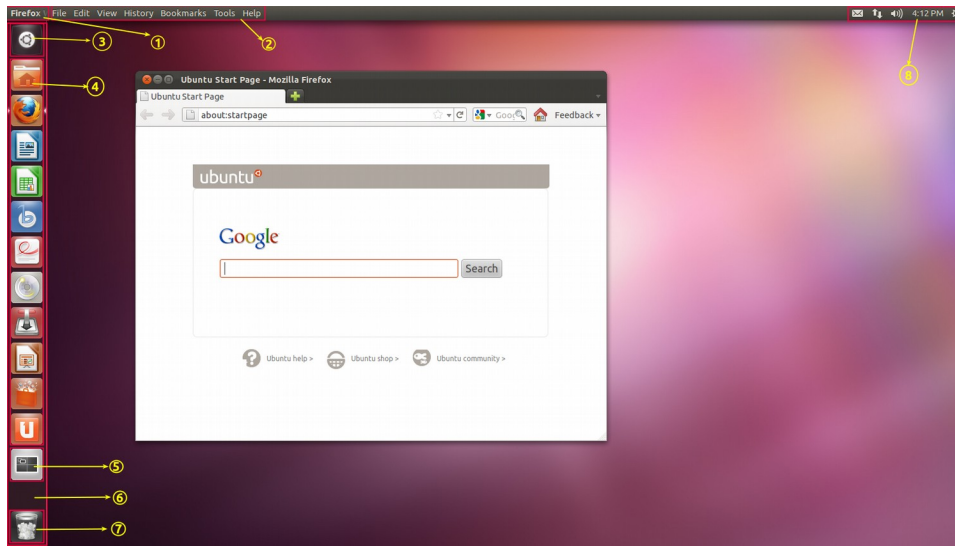
- Linux is about making your computer your own
- The ability to customize is a freedom we should not take for granted



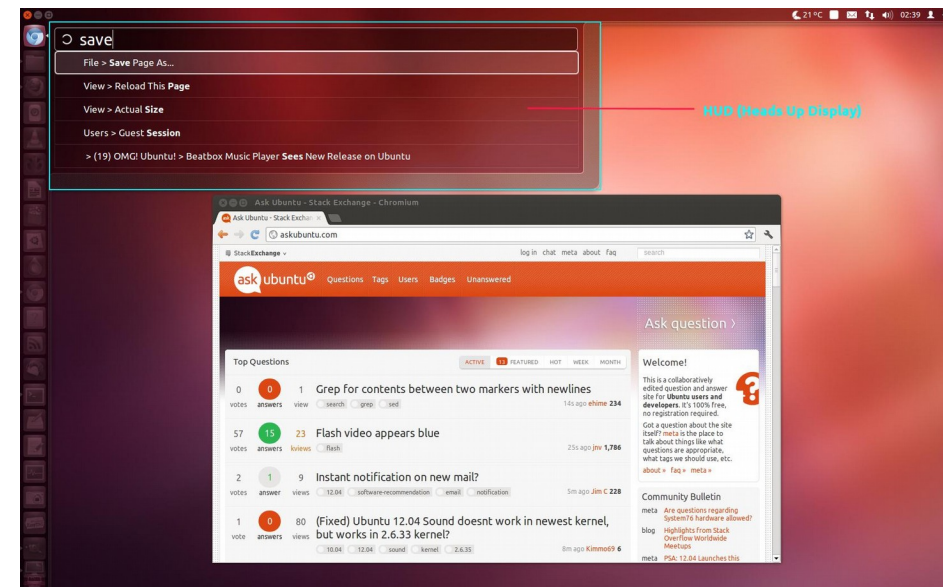
- Originally Ubuntu Netbook Edition 10.10
- Uses already existing applications
- Attempts to open the screen for the user



# Ubuntu Desktop Terminology

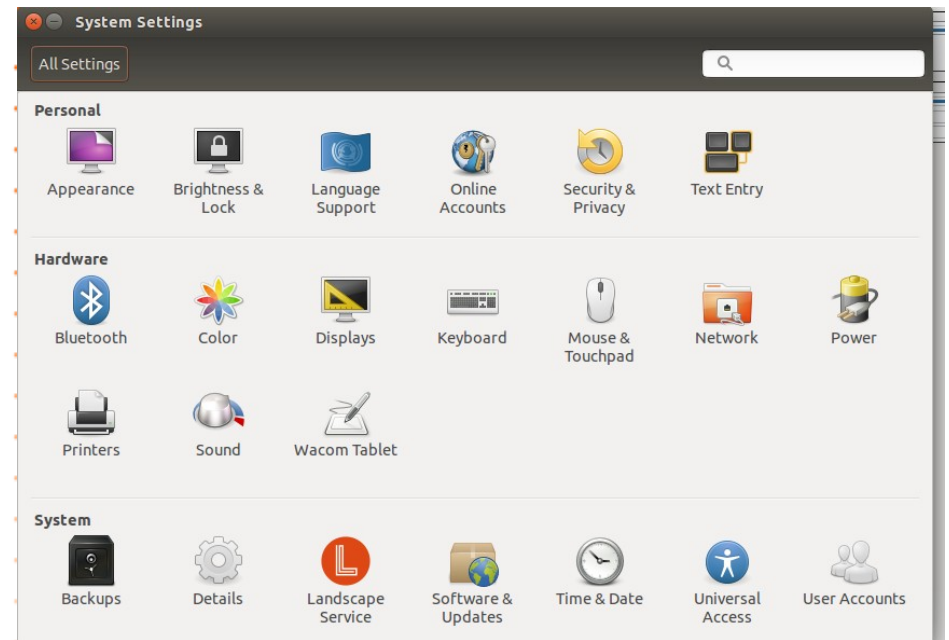


1. Windows Title
2. Application Menu
3. Dash icon
4. Launcher icons
5. Workspace switcher
6. Launcher
7. Trash
8. Indicators



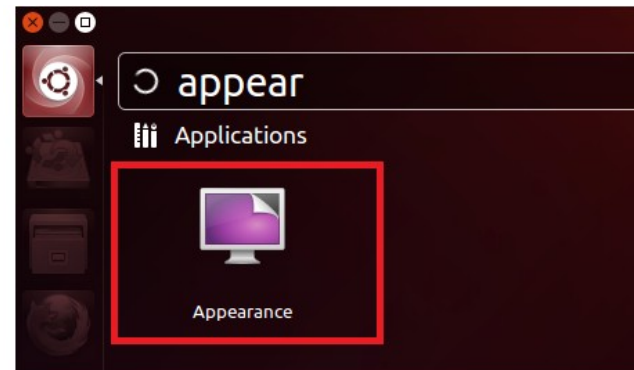
- The best for small customizations

- If you can do the customization in here, do it

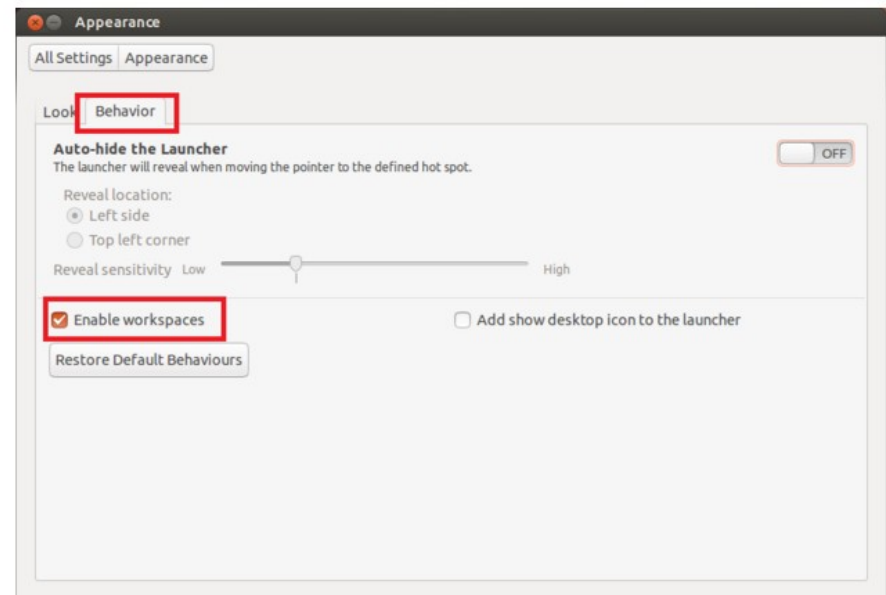


- Is there a reason for you to have multiple workspaces?

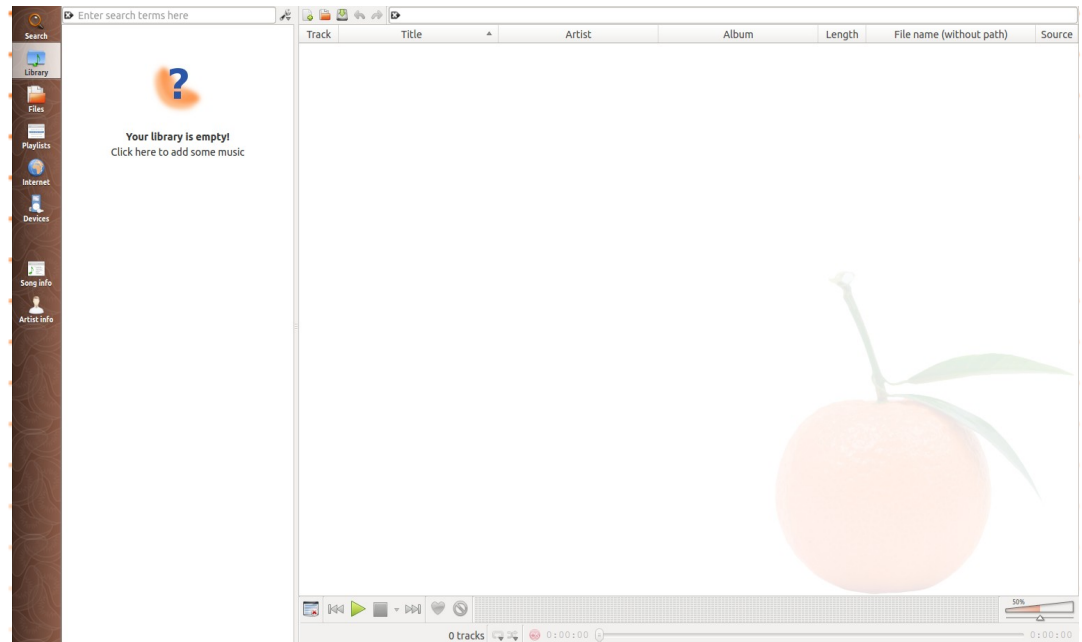
- `ppa:vlijm/wswitcher`



Switch to the behaviour tab and check "Enable Workspaces".

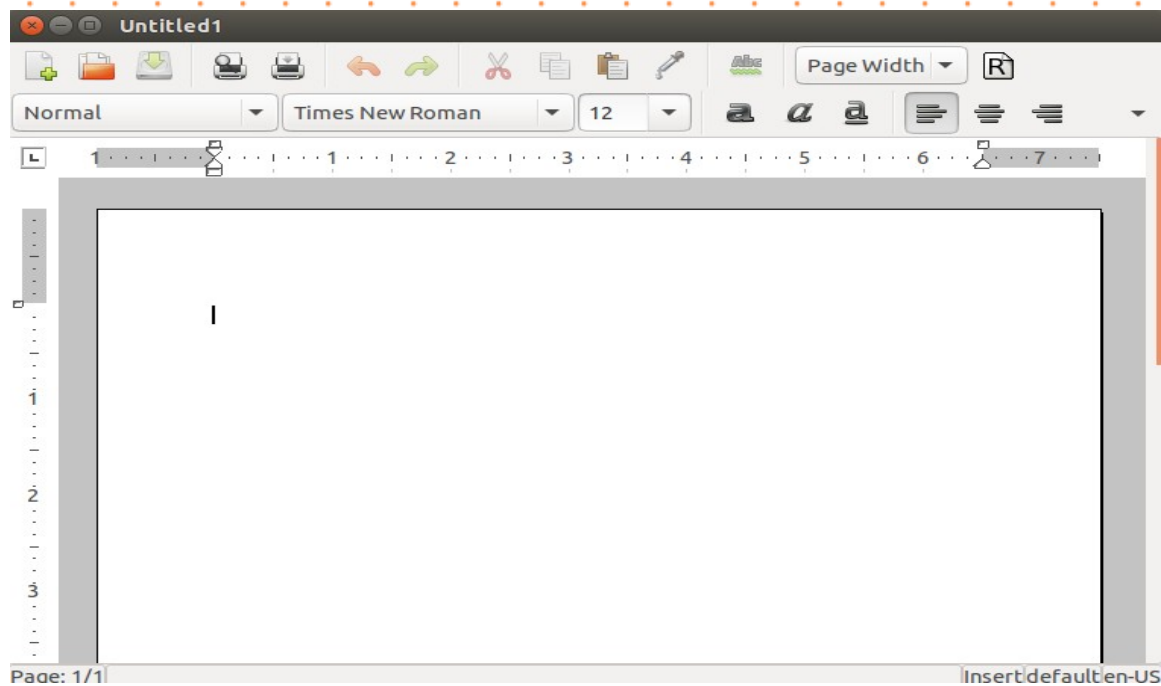


- Banshee
- Googles Music Player
- Clementine

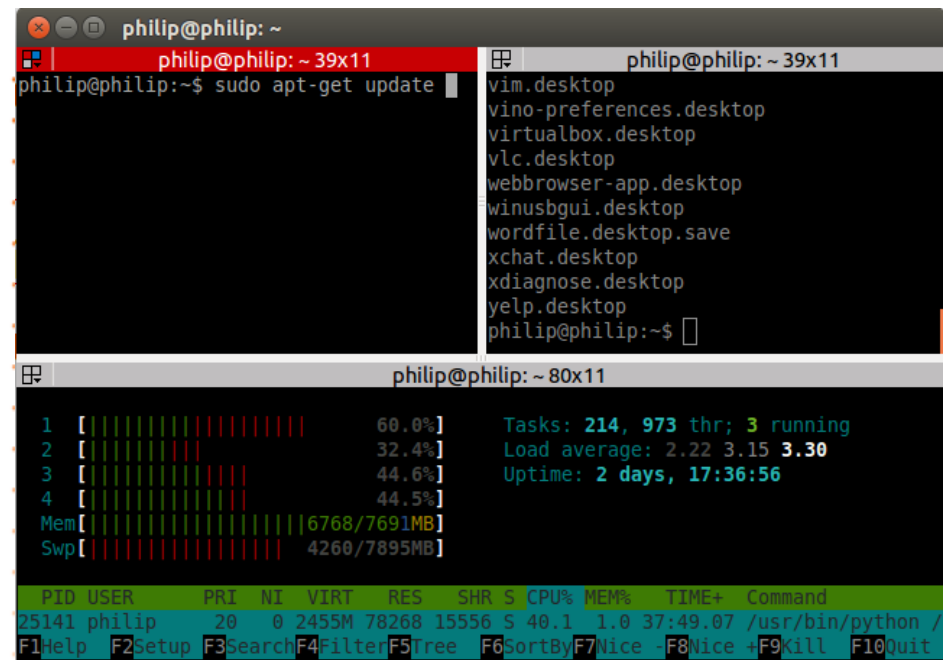




- GoogleDocs
- Calligra
- AbiWord



- Terminator
- Konsole
- Tilda
- Just use a tty?

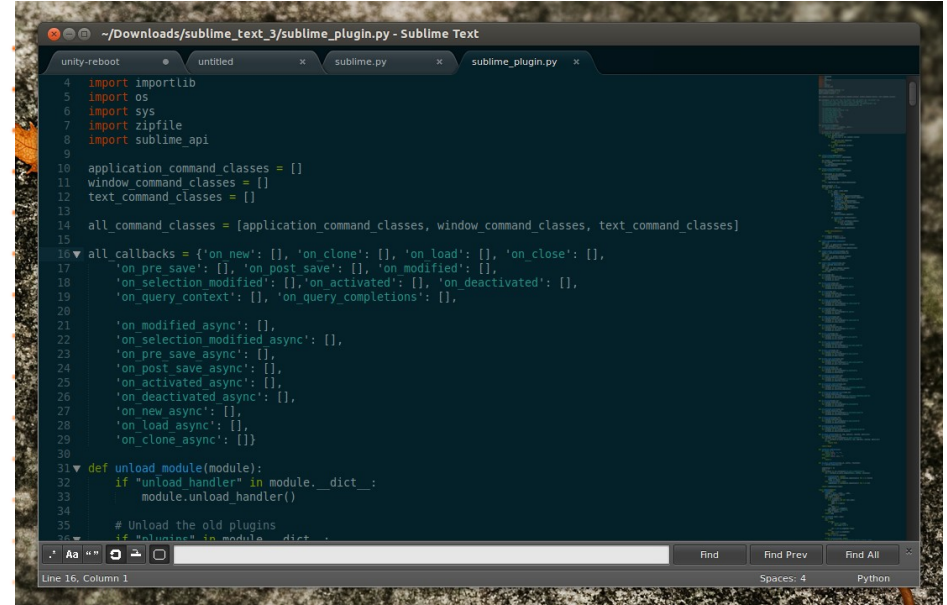


```
philip@philip: ~
philip@philip:~$ sudo apt-get update
vim.desktop
vino-preferences.desktop
virtualbox.desktop
vlc.desktop
webbrowser-app.desktop
winusbgui.desktop
wordfile.desktop.save
xchat.desktop
xdiagnose.desktop
yelp.desktop
philip@philip:~$

philip@philip: ~ 80x11
1 [|||||] 60.0%] Tasks: 214, 973 thr; 3 running
2 [|||||] 32.4%] Load average: 2.22 3.15 3.30
3 [|||||] 44.6%] Uptime: 2 days, 17:36:56
4 [|||||] 44.5%]
Mem[|||||] 6768/7691MB
Swp[|||||] 4260/7895MB

PID USER PRI NI VIRT RES SHR S CPU% MEM% TIME+ Command
25141 philip 20 0 2455M 78268 15556 S 40.1 1.0 37:49.07 /usr/bin/python /
F1Help F2Setup F3Search F4Filter F5Tree F6SortBy F7Nice - F8Nice + F9Kill F10Quit
```

- Vim
- Emacs
- Kwrite
- Geany
- Sublime



The screenshot shows the Sublime Text editor interface with a Python script open. The script defines command classes and a list of callbacks for a plugin. The code is as follows:

```
4 import importlib
5 import os
6 import sys
7 import zipfile
8 import sublime_api
9
10 application_command_classes = []
11 window_command_classes = []
12 text_command_classes = []
13
14 all_command_classes = [application_command_classes, window_command_classes, text_command_classes]
15
16 all_callbacks = {'on_new': [], 'on_clone': [], 'on_load': [], 'on_close': [],
17                'on_pre_save': [], 'on_post_save': [], 'on_modified': [],
18                'on_selection_modified': [], 'on_activated': [], 'on_deactivated': [],
19                'on_query_context': [], 'on_query_completions': [],
20
21                'on_modified_async': [],
22                'on_selection_modified_async': [],
23                'on_pre_save_async': [],
24                'on_post_save_async': [],
25                'on_activated_async': [],
26                'on_deactivated_async': [],
27                'on_new_async': [],
28                'on_load_async': [],
29                'on_clone_async': []}
30
31 def unload_module(module):
32     if "unload_handler" in module.__dict__:
33         module.unload_handler()
34
35 # Unload the old plugins
36 if "plugins" in module.__dict__:
```

- Dolphin
- Midnight Commander

```
mc [philip@philip]:~
Left  File      Command  Options  Right
<-- ~ --> .[^]> <-- ~ --> .[^]>
.n      Name      Size    Modify  time    .n      Name      Size    Modify  time
/.dbus  4096      Oct 16  17:55   /..      UP--DIR  Jul 27  13:50
/.etracer 4096      Jul 28  13:50  /.Broken Rules 4096      Jul 29  01:44
/.gconf 4096      Oct 26  21:14  /.Skype      4096      Oct 29  15:23
/.gimp-2.8 4096      Oct 13  15:32  /.adobe      4096      Jul 27  14:46
/.gnome 4096      Jul 27  15:54  /.audacity-data 4096      Oct 14  19:17
/.gnome2 4096      Oct 16  02:36  /.cache      4096      Oct 29  15:32
/.gnome2_private 4096      Aug 5   23:35  /.cmus      4096      Aug 5   23:37
/.gstreamer-0.10 4096      Oct 29  13:24  /.compiz     4096      Jul 27  14:27
/.gvfs 4096      Oct 16  17:55   /.config     4096      Oct 29  15:32
/.hplip 4096      Sep 6   19:11   /.dbus      4096      Oct 16  17:55
/.icons 4096      Oct 27  03:06  /.etracer    4096      Jul 28  13:50
/.local 4096      Jul 27  13:52  /.gconf      4096      Oct 26  21:14
/.macromedia 4096      Jul 27  14:46  /.gimp-2.8   4096      Oct 13  15:32
/.mozilla 4096      Jul 27  13:57  /.gnome      4096      Jul 27  15:54
/.nano 4096      Oct 18  14:38  /.gnome2     4096      Oct 16  02:36

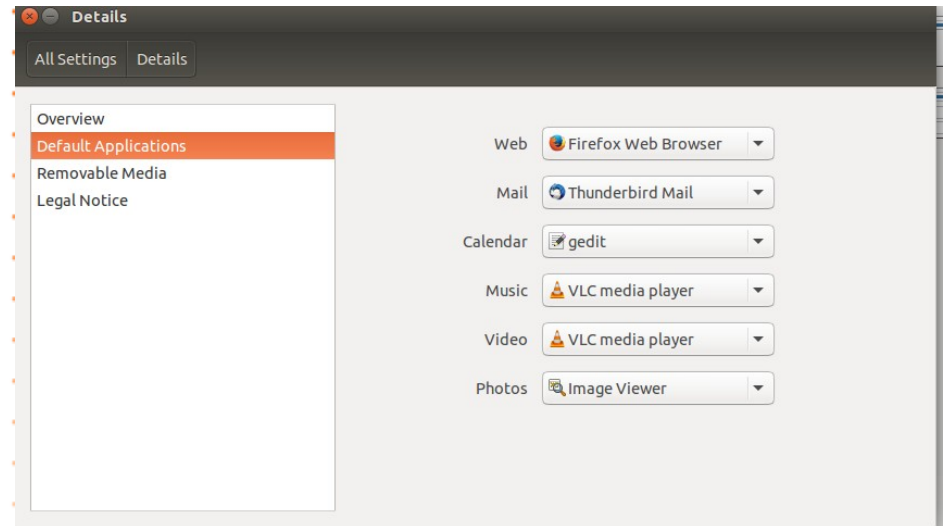
/.nano
37G/109G (33%)
UP--DIR
37G/109G (33%)

Hint: You can browse RPM files by tapping enter on top of an rpm file.
philip@philip:~$
1Help 2Menu 3View 4Edit 5Copy 6RenMov 7Mkdir 8Delete 9PullDn 10Quit
```



- `sudo update-alternatives --all`

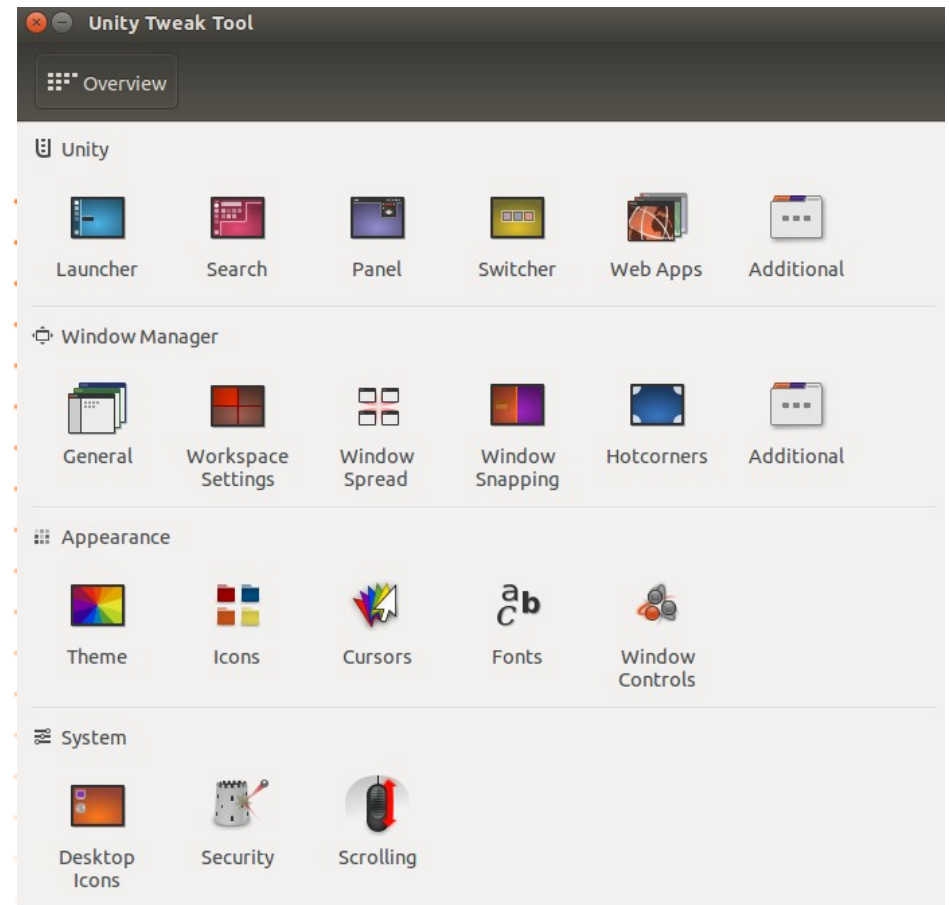
- Change by file association



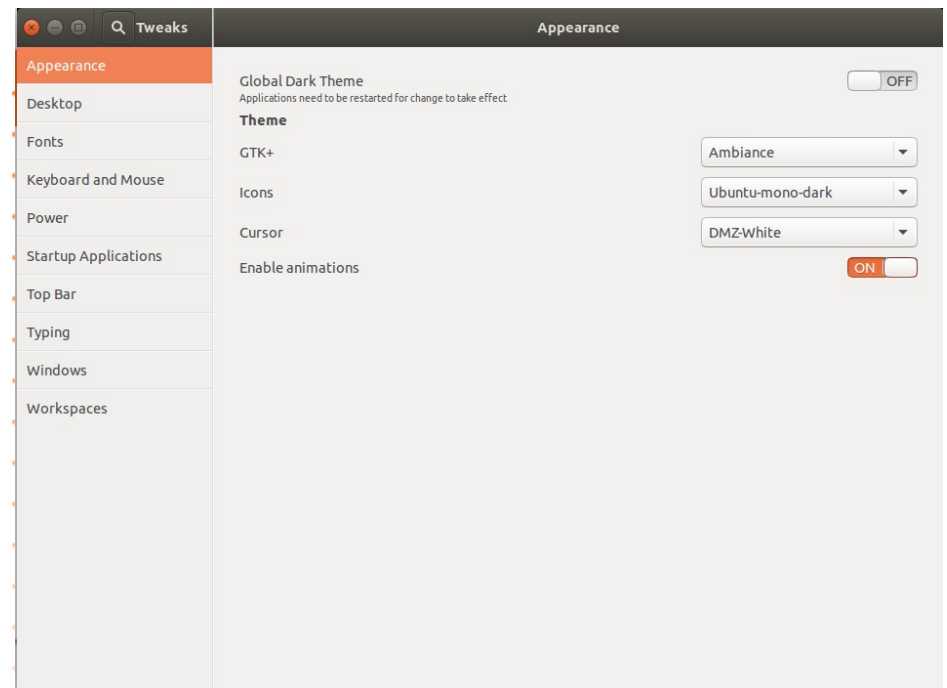
- Easier than editing text
- You have someone else to blame when you  
break your system:



- `sudo apt-get install unity-tweak-tool`



- `sudo apt-get install gnome-tweak-tool`





- Ubuntu Provides several to chose from

- Adding additional themes is easy

- PPA or Maunal install?

- Making a .desktop file

- /usr/share/applications
- chmod +x

```
[Desktop Entry]
Version=x.y
Name=ProgramName
Comment=This is my comment
Exec=/home/alex/Documents/exec.sh
Icon=/home/alex/Pictures/icon.png
Terminal=false
Type=Application
Categories=Utility;Application;
```

```
[Desktop Entry]
Version=1.0
Name=BackMeUp
Comment=Back up your data with one click
Exec=/home/alex/Documents/backup.sh
Icon=/home/alex/Pictures/backup.png
Terminal=false
Type=Application
Categories=Utility;Application;
```

```
/usr/share/applications/program_to_modify.desktop
```

```
[Desktop Action "NameToCallIt"]
```

```
Name="Will appear with mouse held over"
```

```
Exec="command to open application with"
```

```
OnlyShowIn=Unity;
```

```
[Desktop Entry]
```

```
Version=1.0
```

```
Name=Firefox Web Browser
```

```
Comment=Browse the World Wide Web
```

```
GenericName=Web Browser
```

```
Keywords=Internet;WWW;Browser;Web;Explorer
```

```
Exec=firefox %u
```

```
Terminal=false
```

```
X-MultipleArgs=false
```

```
Type=Application
```

```
Icon=firefox
```

```
Categories=GNOME;GTK;Network;WebBrowser;
```

```
MimeType=text/html;text/xml;application/xhtml+xml;application/xml;application/rss+xml;application/rdf+xml;image/gif;image/jpeg;image/png;x-scheme-handler/http;x-scheme-handler/https;x-scheme-handler/ftp;x-scheme-handler/chrome;video/webm;application/x-xpinstall;
```

```
StartupNotify=true
```

```
Actions=NewWindow;NewPrivateWindow;
```

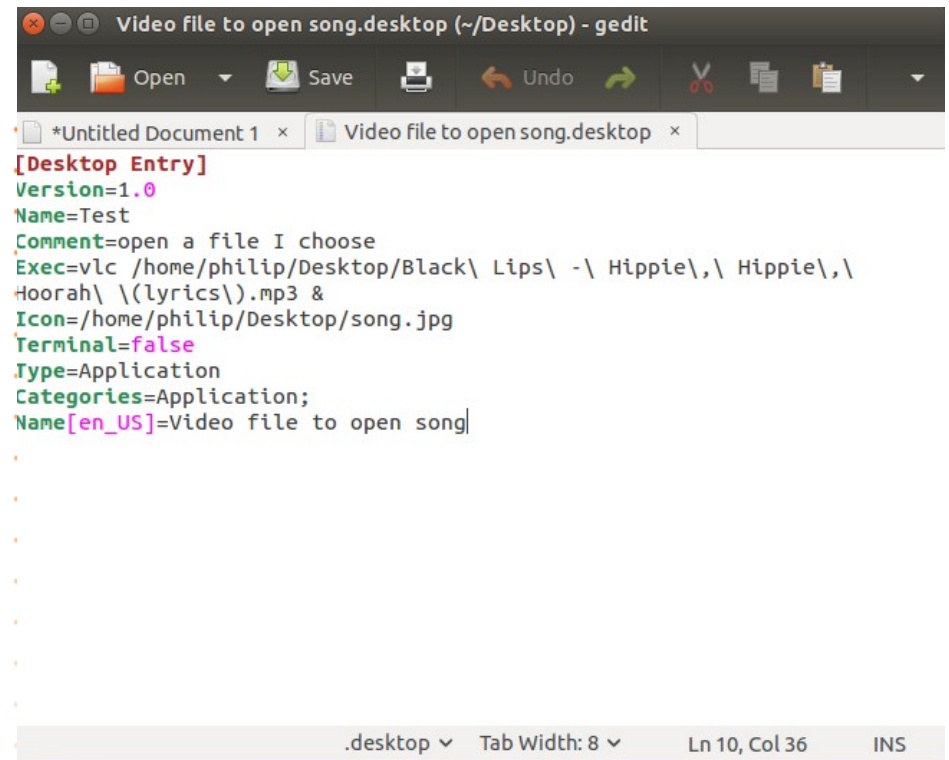
- Allows you to add custom launchers for select commands
- Connect to Servers easier

```
GNU nano 2.4.2 File: gnome-terminal.desktop
[Desktop Entry]
Name=Terminal
Comment=Use the command line
Keywords=shell;prompt;command;commandline;
TryExec=gnome-terminal
Exec=gnome-terminal
Icon=utilities-terminal
Type=Application
X-GNOME-DocPath=gnome-terminal/index.html
X-GNOME-Bugzilla-Bugzilla=GNOME
X-GNOME-Bugzilla-Product=gnome-terminal
X-GNOME-Bugzilla-Component=BugBuddyBugs
X-GNOME-Bugzilla-Version=3.16.2
Categories=GNOME;GTK;System;TerminalEmulator;
StartupNotify=true
X-GNOME-SingleWindow=false
OnlyShowIn=GNOME;Unity;
Actions=New;home_server
X-Ubuntu-Gettext-Domain=gnome-terminal

[Desktop Action New]
Name=New Terminal
Exec=gnome-terminal
OnlyShowIn=Unity

[Desktop Action home_server]
Name=ssh into phllp's home server
Exec=gnome-terminal --disable-factory --sm-client-disable --class=remoteserver -x ssh -t phillp@192.168.1.200
OnlyShowIn=Unity
```

- No need to open a file from an application
- Open the file directly

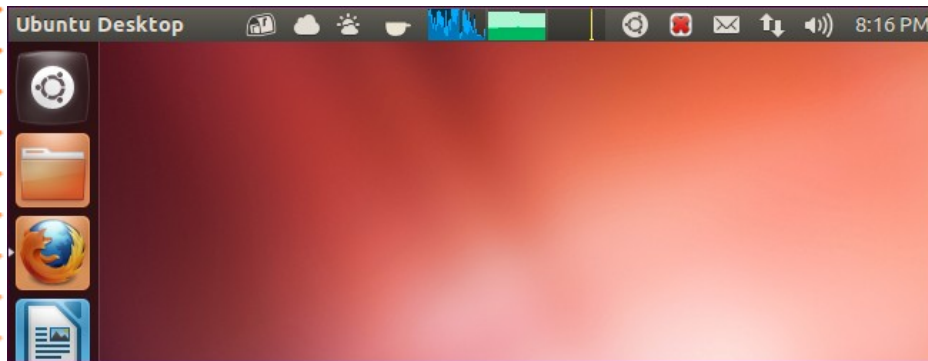


```
Video file to open song.desktop (~/.Desktop) - gedit
Open Save Undo
*Untitled Document 1 x Video file to open song.desktop x
[Desktop Entry]
Version=1.0
Name=Test
Comment=open a file I choose
Exec=vlc /home/philip/Desktop/Black\ Lips\ -\ Hippie\,\ Hippie\,\
Hoorah\ \ (lyrics\).mp3 &
Icon=/home/philip/Desktop/song.jpg
Terminal=false
Type=Application
Categories=Application;
Name[en_US]=Video file to open song|

.desktop Tab Width: 8 Ln 10, Col 36 INS
```

# • Indicators

- apt-cashe search indicator
- `sudo apt-get install`  
“indicator you choose”



## Flavours

Ubuntu is a popular operating system and a popular starting point for people who want to create their own operating systems.

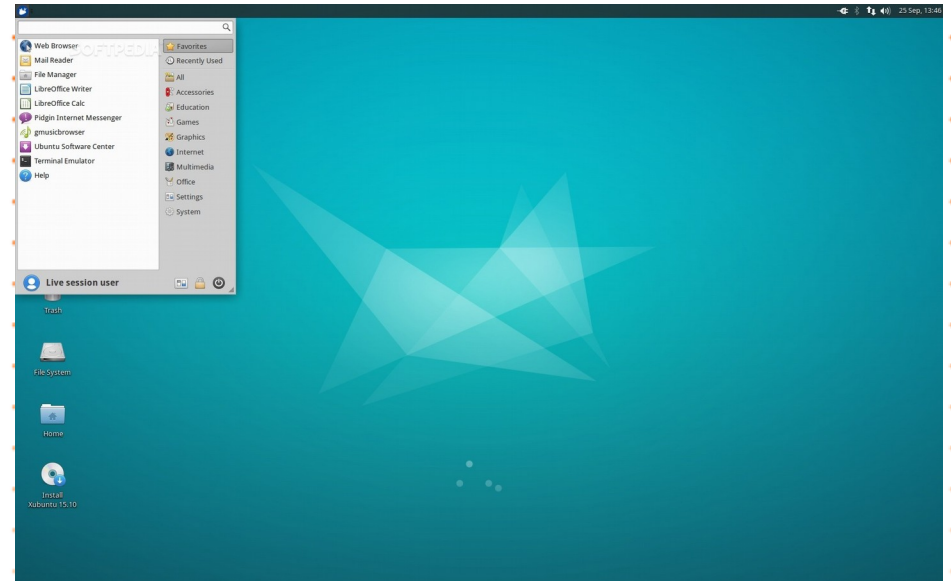
### Recognised Ubuntu flavours

These are flavours that use Ubuntu as their foundation and contribute significantly towards the project.

- **Edubuntu** — Ubuntu for education
- **Ubuntu GNOME** — Ubuntu with the GNOME desktop environment
- **Kubuntu** — Ubuntu with the K Desktop environment
- **Ubuntu Kylin** — Ubuntu localised for China
- **Lubuntu** — Ubuntu that uses LXDE
- **Mythbuntu** — Designed for creating a home theatre PC with MythTV
- **Ubuntu Studio** — Designed for multimedia editing and creation
- **Xubuntu** — Ubuntu with the XFCE desktop environment
- **Ubuntu MATE** — Ubuntu with the MATE desktop environment

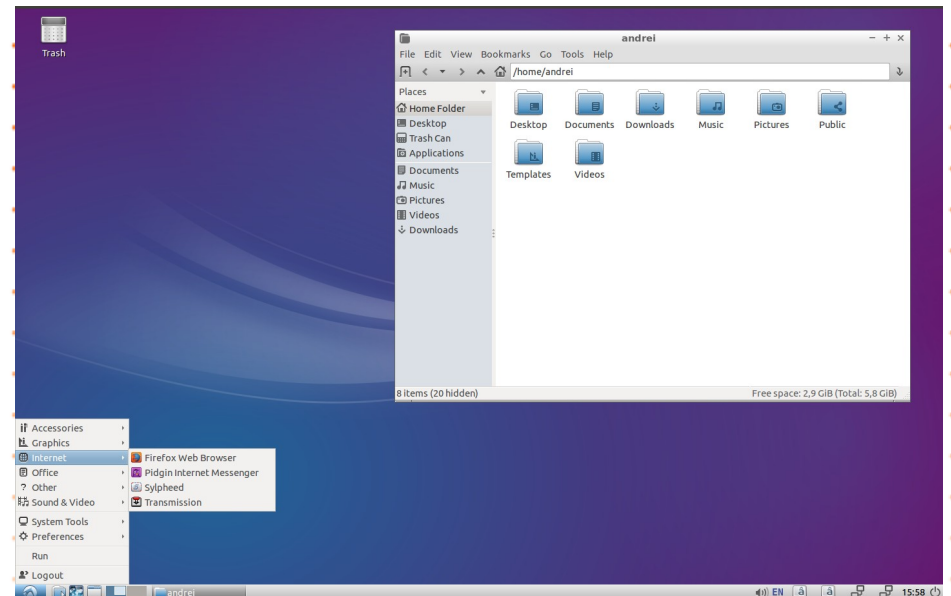


- `sudo apt-get install xubuntu-desktop`

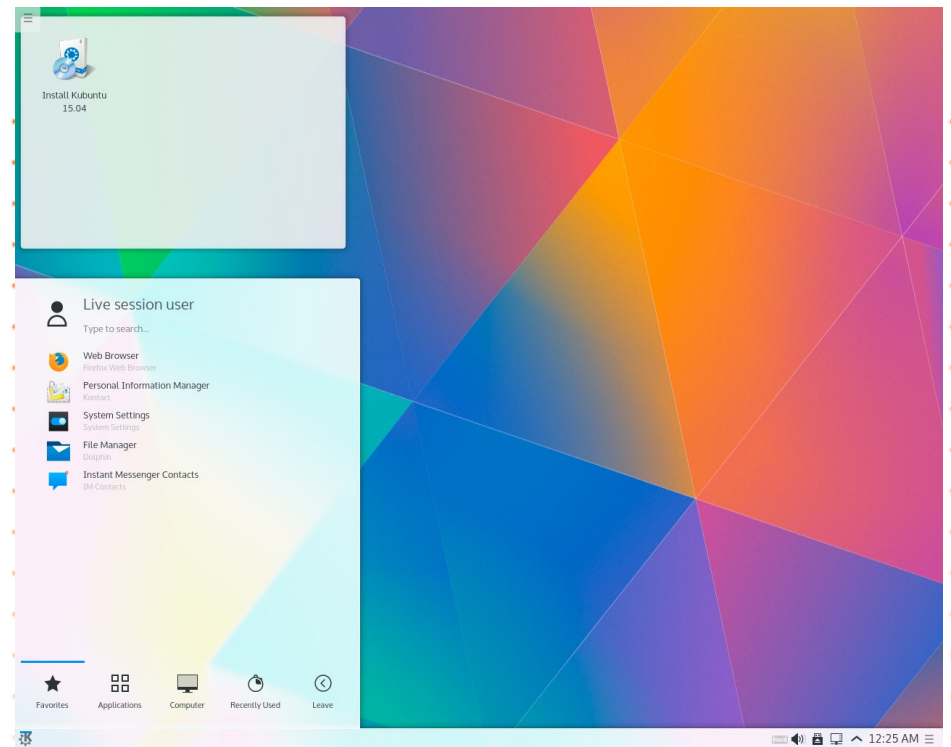




- `sudo apt-get install lubuntu-desktop`



- `sudo apt-get install kubuntu-desktop`



- `dconf reset -f /org/compiz/`
- `setsid unity`
- `unity --reset-icons`

# Final Thoughts & Questions